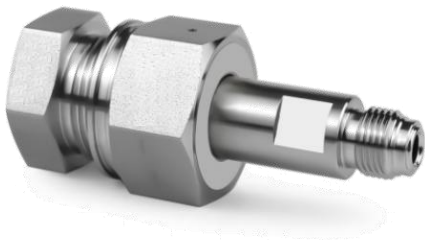


# CGA/DISS 钢瓶接头



- 接头体、螺母、垫片、接头堵头、钢瓶堵头。
- 提供不锈钢316L、316LVAR材料。

## 概述

CGA/DISS 钢瓶接头作为仪器分析和工艺高纯度/专业气瓶气体客户的重要选择, 通过其标准化设计、高纯度和超高纯度传输能力以及严格的安全性能, 确保了气体在传输过程中的稳定性和安全性。

## 特点

- 提供高纯和超高纯组件: 接头体、螺母、垫片、接头堵头、钢瓶堵头。
- 提供不锈钢316L、316L VAR材料 (如需其它特殊材料可定制)。
- 提供镍、PVDF、PCTFE材质垫片。
- 每一个产品都有唯一的编号,做到产品全程可追溯性。
- 对每一个产品的功能性和清洁度进行一致的检查。

## 材料

材料	代号	标准
<b>接头材料</b>		
316L不锈钢	6L	ASME SA479
316LVIM-VAR不锈钢	6LV	ASME SA479
<b>垫片材料</b>		
镍	NI	ASTM F3
PCTFE	PC	ASTM D1430
PVDF	PV	ASTM D5575
PTFE	PT	ASTM D1710

## 压力额定值

样本所示工作压力是在室温下根据ASMEB31.3和B31.1计算的。

## 温度额定值

元件	材料	最高温度
接头	316L不锈钢	538°C (1000°F)
	316LVIM-VAR不锈钢	
垫片	镍	315°C (600°F)
	PCTFE	125°C (260°F)
	PVDF	170°C (340°F)
	PTFE	250°C (480°F)

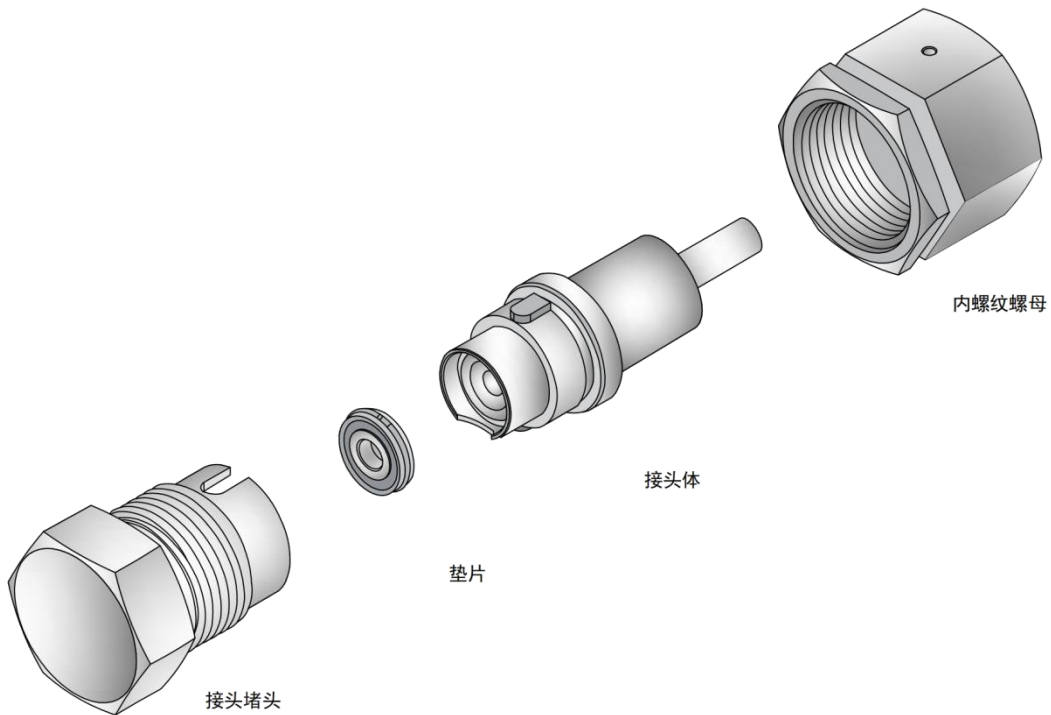
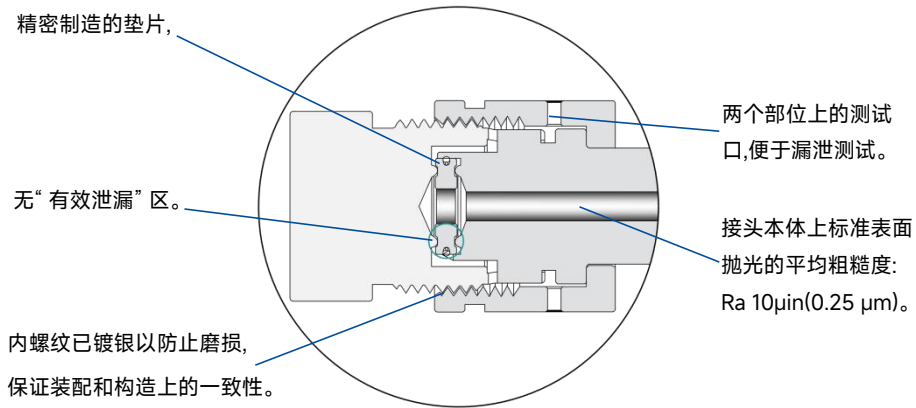
## 镀层

钢瓶接头内螺纹螺母是镀银的。必须防止会使镀层受损的清洗, 电抛光和钝化所用的化学工艺, 如果镀层受损或消失, 则会发生螺纹磨损, 管接头组件损坏并不能获得正常的密封。

## 清洁和包装

每一个接头都遵循《BAISYLOK® 标准清洁和包装规范》。经过特殊的清洁处理以去除机油, 油脂和微小颗粒。现有各种具备可控表面光洁度, 电抛光和经过特殊清洁的接头本体, 以满足超高纯度的系统要求。

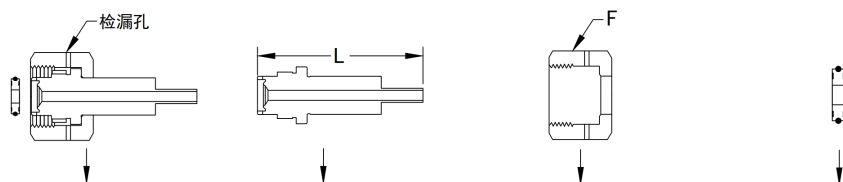
## 安装说明



## 订购信息

- 每一个元件均可单独购买。
- 把材料代码作为后缀添加到基础订购号来得到完整订购号。
- 工艺规范：
  - 标准清洁和包装工艺，不需要后缀。  
示例：10-632-W4-6L
  - 超高纯工艺规范，要订购时，添加“P”为后缀。  
示例：10-632-W4-6L-P

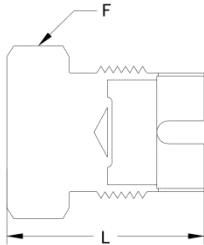
## CGA/DISS 系列标准接头



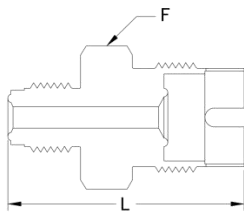
CGA/DISS 系列	端接形式	组合件 接头、螺母、垫片 基本订购号	L	接头体 基本订购号	光洁度		螺母 基本订购号	F	垫片 订购型号	
					Ra	EP			NI	PCTFE
632	BW 1/4"	40-632-W4	2-1/2"	10-632-W4	Ra 0.2	EP	20-630-N	1-1/4"	30-NI-0	30-PC-0
	BCR 1/4"	40-632-BCR4	3"	10-632-BCR4	Ra 0.2	EP	20-630-N	1-1/4"	30-NI-0	30-PC-0
	NPT 1/4"	40-632-N4	3"	10-632-N4	Ra 0.2	EP	20-630-N	1-1/4"	30-NI-0	30-PC-0
634	BW 1/4"	40-634-W4	2-1/2"	10-634-W4	Ra 0.2	EP	20-630-N	1-1/4"	30-NI-0	30-PC-0
	BCR 1/4"	40-634-BCR4	3"	10-634-BCR4	Ra 0.2	EP	20-630-N	1-1/4"	30-NI-0	30-PC-0
	NPT 1/4"	40-634-N4	3"	10-634-N4	Ra 0.2	EP	20-630-N	1-1/4"	30-NI-0	30-PC-0
636	BW 1/4"	40-636-W4	2-1/2"	10-636-W4	Ra 0.2	EP	20-630-N	1-1/4"	30-NI-0	30-PC-0
	BCR 1/4"	40-636-BCR4	3"	10-636-BCR4	Ra 0.2	EP	20-630-N	1-1/4"	30-NI-0	30-PC-0
	NPT 1/4"	40-636-N4	3"	10-636-N4	Ra 0.2	EP	20-630-N	1-1/4"	30-NI-0	30-PC-0
638	BW 1/4"	40-638-W4	2-1/2"	10-638-W4	Ra 0.2	EP	20-630-N	1-1/4"	30-NI-0	30-PC-0
	BCR 1/4"	40-638-BCR4	3"	10-638-BCR4	Ra 0.2	EP	20-630-N	1-1/4"	30-NI-0	30-PC-0
	NPT 1/4"	40-638-N4	3"	10-638-N4	Ra 0.2	EP	20-630-N	1-1/4"	30-NI-0	30-PC-0
640	BW 1/4"	40-640-W4	2-1/2"	10-640-W4	Ra 0.2	EP	20-630-N	1-1/4"	30-NI-0	30-PC-0
	BCR 1/4"	40-640-BCR4	3"	10-640-BCR4	Ra 0.2	EP	20-630-N	1-1/4"	30-NI-0	30-PC-0
	NPT 1/4"	40-640-N4	3"	10-640-N4	Ra 0.2	EP	20-630-N	1-1/4"	30-NI-0	30-PC-0
712	BW 1/4"	40-712-W4	2-1/2"	10-712-W4	Ra 0.2	EP	20-710-N	1-1/4"	30-NI-0	30-PC-0
	BCR 1/4"	40-712-BCR4	3"	10-712-BCR4	Ra 0.2	EP	20-710-N	1-1/4"	30-NI-0	30-PC-0
	NPT 1/4"	40-712-N4	3"	10-712-N4	Ra 0.2	EP	20-710-N	1-1/4"	30-NI-0	30-PC-0
714	BW 1/4"	40-714-W4	2-1/2"	10-714-W4	Ra 0.2	EP	20-710-N	1-1/4"	30-NI-0	30-PC-0
	BCR 1/4"	40-714-BCR4	3"	10-714-BCR4	Ra 0.2	EP	20-710-N	1-1/4"	30-NI-0	30-PC-0
	NPT 1/4"	40-714-N4	3"	10-714-N4	Ra 0.2	EP	20-710-N	1-1/4"	30-NI-0	30-PC-0
716	BW 1/4"	40-716-W4	2-1/2"	10-716-W4	Ra 0.2	EP	20-710-N	1-1/4"	30-NI-0	30-PC-0
	BCR 1/4"	40-716-BCR4	3"	10-716-BCR4	Ra 0.2	EP	20-710-N	1-1/4"	30-NI-0	30-PC-0
	NPT 1/4"	40-716-N4	3"	10-716-N4	Ra 0.2	EP	20-710-N	1-1/4"	30-NI-0	30-PC-0
718	BW 1/4"	40-718-W4	2-1/2"	10-718-W4	Ra 0.2	EP	20-710-N	1-1/4"	30-NI-0	30-PC-0
	BCR 1/4"	40-718-BCR4	3"	10-718-BCR4	Ra 0.2	EP	20-710-N	1-1/4"	30-NI-0	30-PC-0
	NPT 1/4"	40-718-N4	3"	10-718-N4	Ra 0.2	EP	20-710-N	1-1/4"	30-NI-0	30-PC-0
720	BW 1/4"	40-720-W4	2-1/2"	10-720-W4	Ra 0.2	EP	20-710-N	1-1/4"	30-NI-0	30-PC-0
	BCR 1/4"	40-720-BCR4	3"	10-720-BCR4	Ra 0.2	EP	20-710-N	1-1/4"	30-NI-0	30-PC-0
	NPT 1/4"	40-720-N4	3"	10-720-N4	Ra 0.2	EP	20-710-N	1-1/4"	30-NI-0	30-PC-0
722	BW 1/4"	40-722-W4	2-1/2"	10-722-W4	Ra 0.2	EP	20-710-N	1-1/4"	30-NI-0	30-PC-0
	BCR 1/4"	40-722-BCR4	3"	10-722-BCR4	Ra 0.2	EP	20-710-N	1-1/4"	30-NI-0	30-PC-0
	NPT 1/4"	40-722-N4	3"	10-722-N4	Ra 0.2	EP	20-710-N	1-1/4"	30-NI-0	30-PC-0
724	BW 1/4"	40-724-W4	2-1/2"	10-724-W4	Ra 0.2	EP	20-710-N	1-1/4"	30-NI-0	30-PC-0
	BCR 1/4"	40-724-BCR4	3"	10-724-BCR4	Ra 0.2	EP	20-710-N	1-1/4"	30-NI-0	30-PC-0
	NPT 1/4"	40-724-N4	3"	10-724-N4	Ra 0.2	EP	20-710-N	1-1/4"	30-NI-0	30-PC-0
726	BW 1/4"	40-726-W4	2-1/2"	10-726-W4	Ra 0.2	EP	20-710-N	1-1/4"	30-NI-0	30-PC-0
	BCR 1/4"	40-726-BCR4	3"	10-726-BCR4	Ra 0.2	EP	20-710-N	1-1/4"	30-NI-0	30-PC-0
	NPT 1/4"	40-726-N4	3"	10-726-N4	Ra 0.2	EP	20-710-N	1-1/4"	30-NI-0	30-PC-0
728	BW 1/4"	40-728-W4	2-1/2"	10-728-W4	Ra 0.2	EP	20-710-N	1-1/4"	30-NI-0	30-PC-0
	BCR 1/4"	40-728-BCR4	3"	10-728-BCR4	Ra 0.2	EP	20-710-N	1-1/4"	30-NI-0	30-PC-0
	NPT 1/4"	40-728-N4	3"	10-728-N4	Ra 0.2	EP	20-710-N	1-1/4"	30-NI-0	30-PC-0

## CGA/DISS 系列钢瓶接头和转接头

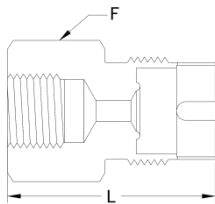
接头堵头



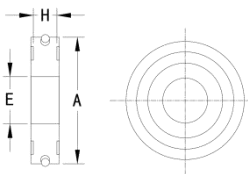
BCR外螺纹接头



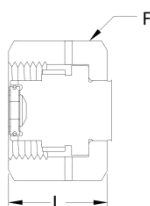
NPT内螺纹接头



垫片



钢瓶阀出口堵头

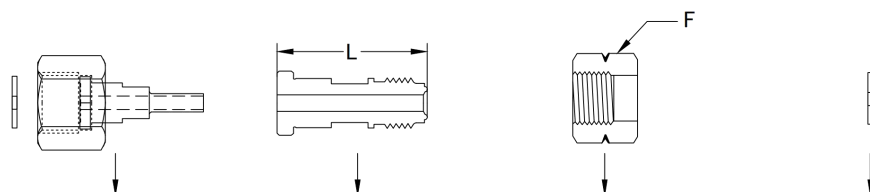


CGA/DISS 系列	端接形式	基本订购号	L	F
632	Blank Plug	50-632-BP4	1.5"	1-1/8"
	BCR 1/4"	60-632-BCR4	2"	1-1/8"
	NPT 1/4"	60-632-FN4	1.8"	1-1/8"
634	Blank Plug	50-634-BP4	1.5"	1-1/8"
	BCR 1/4"	60-634-BCR4	2"	1-1/8"
	NPT 1/4"	60-634-FN4	1.8"	1-1/8"
636	Blank Plug	50-636-BP4	1.5"	1-1/8"
	BCR 1/4"	60-636-BCR4	2"	1-1/8"
	NPT 1/4"	60-636-FN4	1.8"	1-1/8"
638	Blank Plug	50-638-BP4	1.5"	1-1/8"
	BCR 1/4"	60-638-BCR4	2"	1-1/8"
	NPT 1/4"	60-638-FN4	1.8"	1-1/8"
640	Blank Plug	50-640-BP4	1.5"	1-1/8"
	BCR 1/4"	60-640-BCR4	2"	1-1/8"
	NPT 1/4"	60-640-FN4	1.8"	1-1/8"
712	Blank Plug	50-712-BP4	1.5"	1-1/4"
	BCR 1/4"	60-712-BCR4	2"	1-1/4"
	NPT 1/4"	60-712-FN4	1.8"	1-1/4"
714	Blank Plug	50-714-BP4	1.5"	1-1/4"
	NPT 1/4"	60-714-FN4	1.8"	1-1/4"
716	Blank Plug	50-716-BP4	1.5"	1-1/4"
	BCR 1/4"	60-716-BCR4	2"	1-1/4"
	NPT 1/4"	60-716-FN4	1.8"	1-1/4"
718	Blank Plug	50-718-BP4	1.5"	1-1/4"
	BCR 1/4"	60-718-BCR4	2"	1-1/4"
	NPT 1/4"	60-718-FN4	1.8"	1-1/4"
720	Blank Plug	50-720-BP4	1.5"	1-1/4"
	BCR 1/4"	60-720-BCR4	2"	1-1/4"
	NPT 1/4"	60-720-N4	1.8"	1-1/4"
722	Blank Plug	50-722-BP4	1.5"	1-1/4"
	BCR 1/4"	60-722-BCR4	2"	1-1/4"
	NPT 1/4"	60-722-FN4	1.8"	1-1/4"
724	Blank Plug	50-724-BP4	1.5"	1-1/4"
	BCR 1/4"	60-724-BCR4	2"	1-1/4"
	NPT 1/4"	60-724-FN4	1.8"	1-1/4"
726	Blank Plug	50-726-BP4	1.5"	1-1/4"
	BCR 1/4"	60-726-BCR4	2"	1-1/4"
	NPT 1/4"	60-726-FN4	1.8"	1-1/4"
728	Blank Plug	50-728-BP4	1.5"	1-1/4"
	BCR 1/4"	60-728-BCR4	2"	1-1/4"
	NPT 1/4"	60-728-FN4	1.8"	1-1/4"

CGA/DISS 系列	垫片材质	基本订购号	A	H	E
630/710	NI	30-NI-0	0.56"	0.11"	0.21"
	PCTFE	30-PC-0	0.56"	0.11"	0.21"

CGA/DISS 系列	端接形式	基本订购号	L	F
630	Outlet Cap	70-630-OC	1-1/8"	1-1/4"
710	Outlet Cap	70-710-OC	1-1/8"	1-3/8"

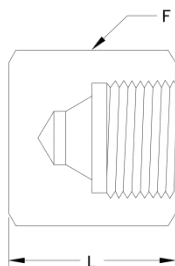
## CGA系列标准接头



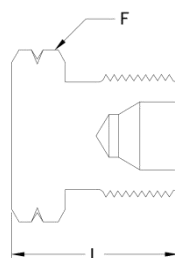
CGA/DISS 系列	端接形式	组合件 接头、螺母、垫片 基本订购号	L	接头体 基本订购号	光洁度		螺母 基本订购号	F	垫片 订购型号	
					Ra	EP			NI	PCTFE
170	BW 1/4"	40-170-W4	1-1/4"	10-170-W4	Ra 0.2	EP	20-170-N	1-1/16"	30-PV-1	30-PC-1
	NPT 1/4"	40-170-N4	1-1/4"	10-170-N4	Ra 0.2	EP	20-170-N	1-1/16"	30-PV-1	30-PC-1
180	BW 1/4"	40-180-W4	1-1/4"	10-180-W4	Ra 0.2	EP	20-180-N	3/4"	30-PV-2	30-PC-2
	NPT 1/4"	40-180-N4	1-1/4"	10-180-N4	Ra 0.2	EP	20-180-N	3/4"	30-PV-2	30-PC-2
290	BW 1/4"	40-290-W4	2-5/8"	10-290-W4	Ra 0.2	EP	20-290-N	1"	-	-
	NPT 1/4"	40-290-N4	2-1/4"	10-290-N4	Ra 0.2	EP	20-290-N	1"	-	-
296	BW 1/4"	40-296-W4	2-5/8"	10-296-W4	Ra 0.2	EP	20-296-P	7/8"	-	-
	BCR 1/4"	40-296-BCR4	2-3/4"	10-296-BCR4	Ra 0.2	EP	20-296-P	7/8"	-	-
	NPT 1/4"	40-296-N4	3-1/2"	10-296-N4	Ra 0.2	EP	20-296-P	7/8"	-	-
320	BW 1/4"	40-320-W4	1-3/4"	10-320-W4	Ra 0.2	EP	20-320-N	1-1/8"	30-PV-3	30-PC-3
	BCR 1/4"	40-320-BCR4	1-3/4"	10-320-BCR4	Ra 0.2	EP	20-320-N	1-1/8"	30-PV-3	30-PC-3
	NPT 1/4"	40-320-N4	2-1/2"	10-320-N4	Ra 0.2	EP	20-320-N	1-1/8"	30-PV-3	30-PC-3
326	BW 1/4"	40-326-W4	2-1/4"	10-326-W4	Ra 0.2	EP	20-326-N	1-1/8"	-	-
	BCR 1/4"	40-326-BCR4	2-1/4"	10-326-BCR4	Ra 0.2	EP	20-326-N	1-1/8"	-	-
	NPT 1/4"	40-326-N4	3"	10-326-N4	Ra 0.2	EP	20-326-N	1-1/8"	-	-
330	BW 1/4"	40-330-W4	1-3/4"	10-330-W4	Ra 0.2	EP	20-330-N	1-1/8"	30-PV-3	30-PC-3
	BCR 1/4"	40-330-BCR4	1-3/4"	10-330-BCR4	Ra 0.2	EP	20-330-N	1-1/8"	30-PV-3	30-PC-3
	NPT 1/4"	40-330-N4	2-1/2"	10-330-N4	Ra 0.2	EP	20-330-N	1-1/8"	30-PV-3	30-PC-0
346	BW 1/4"	40-346-W4	2-5/16"	10-346-W4	Ra 0.2	EP	20-346-N	1-1/8"	-	-
	BCR 1/4"	40-346-BCR4	2-1/4"	10-346-BCR4	Ra 0.2	EP	20-346-N	1-1/8"	-	-
	NPT 1/4"	40-346-N4	3"	10-346-N4	Ra 0.2	EP	20-346-N	1-1/8"	-	-
350	BW 1/4"	40-350-W4	2-5/16"	10-350-W4	Ra 0.2	EP	20-350-N	1-1/8"	-	-
	BCR 1/4"	40-350-BCR4	2-1/4"	10-350-BCR4	Ra 0.2	EP	20-350-N	1-1/8"	-	-
	NPT 1/4"	40-350-N4	3"	10-350-N4	Ra 0.2	EP	20-350-N	1-1/8"	-	-
510	BW 1/4"	40-510-W4	2-5/8"	10-510-W4	Ra 0.2	EP	20-510-P	1-1/8"	-	-
	BCR 1/4"	40-510-BCR4	2-3/4"	10-510-BCR4	Ra 0.2	EP	20-510-P	1-1/8"	-	-
	NPT 1/4"	40-510-N4	3-1/2"	10-510-N4	Ra 0.2	EP	20-510-P	1-1/8"	-	-
540	BW 1/4"	40-540-W4	2-1/4"	10-540-W4	Ra 0.2	EP	20-540-N	1-1/8"	-	-
	BCR 1/4"	40-540-BCR4	2-1/4"	10-540-BCR4	Ra 0.2	EP	20-540-N	1-1/8"	-	-
	NPT 1/4"	40-540-N4	3"	10-540-N4	Ra 0.2	EP	20-540-N	1-1/8"	-	-
580	BW 1/4"	40-580-W4	2-5/8"	10-580-W4	Ra 0.2	EP	20-580-P	1-1/8"	-	-
	BCR 1/4"	40-580-BCR4	2-3/4"	10-580-BCR4	Ra 0.2	EP	20-580-P	1-1/8"	-	-
	NPT 1/4"	40-580-N4	3-1/2"	10-580-N4	Ra 0.2	EP	20-580-P	1-1/8"	-	-
590	BW 1/4"	40-590-W4	2-5/8"	10-590-W4	Ra 0.2	EP	20-590-P	1-1/8"	-	-
	BCR 1/4"	40-590-BCR4	2-3/4"	10-590-BCR4	Ra 0.2	EP	20-590-P	1-1/8"	-	-
	NPT 1/4"	40-590-N4	3-1/2"	10-590-N4	Ra 0.2	EP	20-590-P	1-1/8"	-	-
660	BW 1/4"	40-660-W4	2-3/16"	10-660-W4	Ra 0.2	EP	20-660-N	1-1/4"	30-PV-4	30-PC-4
	BCR 1/4"	40-660-BCR4	1-7/8"	10-660-BCR4	Ra 0.2	EP	20-660-N	1-1/4"	30-PV-4	30-PC-4
	NPT 1/4"	40-660-N4	2-5/8"	10-660-N4	Ra 0.2	EP	20-660-N	1-1/4"	30-PV-4	30-PC-4
670	BW 1/4"	40-670-W4	2-3/16"	10-670-W4	Ra 0.2	EP	20-670-N	1-1/4"	30-PV-4	30-PC-4
	BCR 1/4"	40-670-BCR4	1-7/8"	10-670-BCR4	Ra 0.2	EP	20-670-N	1-1/4"	30-PV-4	30-PC-4
	NPT 1/4"	40-670-N4	2-5/8"	10-670-N4	Ra 0.2	EP	20-670-N	1-1/4"	30-PV-4	30-PC-4
677	BW 1/4"	40-677-W4	2"	10-677-W4	Ra 0.2	EP	20-677-N	1-1/4"	-	-
	BCR 1/4"	40-677-BCR4	1-7/8"	10-677-BCR4	Ra 0.2	EP	20-677-N	1-1/4"	-	-
	NPT 1/4"	40-677-N4	2-3/8"	10-677-N4	Ra 0.2	EP	20-677-N	1-1/4"	-	-
678	BW 1/4"	40-678-W4	2-1/2"	10-678-W4	Ra 0.2	EP	20-678-N	1-1/4"	30-PV-5	30-PC-5
	BCR 1/4"	40-678-BCR4	2"	10-678-BCR4	Ra 0.2	EP	20-678-N	1-1/4"	30-PV-5	30-PC-5
	NPT 1/4"	40-678-N4	2-3/8"	10-678-N4	Ra 0.2	EP	20-678-N	1-1/4"	30-PV-5	30-PC-5
679	BW 1/4"	40-679-W4	2-1/2"	10-679-W4	Ra 0.2	EP	20-679-N	1-1/4"	30-PV-5	30-PC-5
	BCR 1/4"	40-679-BCR4	3"	10-679-BCR4	Ra 0.2	EP	20-679-N	1-1/4"	30-PV-5	30-PC-5
	NPT 1/4"	40-679-N4	3"	10-679-N4	Ra 0.2	EP	20-679-N	1-1/4"	30-PV-5	30-PC-5

## CGA/DISS 系列钢瓶接头和转接头

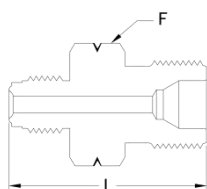
### 内螺纹堵头



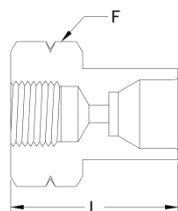
### 外螺纹堵头



### BCR外螺纹接头



### NPT内螺纹接头



CGA/DISS 系列	端接形式	基本订购号	L	F
296	Blank Cap	50-296-BC	1-3/8"	1-1/8"
	BCR 1/4"	60-296-BCR4	2"	1-1/8"
	NPT 1/4"	60-296-FN4	2"	1-1/8"
320	Blank Plug	50-320-BP	1-1/8"	1"
	BCR 1/4"	60-320-BCR4	1-3/4"	1"
	NPT 1/4"	60-320-FN4	1-1/8"	1"
326	Blank Plug	50-326-BP	1-1/8"	1"
	BCR 1/4"	60-326-BCR4	1-3/4"	1"
	NPT 1/4"	60-326-FN4	1-3/8"	1"
330	Blank Plug	50-330-BP	1-1/8"	1"
	BCR 1/4"	60-330-BCR4	1-3/4"	1"
	NPT 1/4"	60-330-FN4	1-3/8"	1"
346	Blank Plug	50-346-BP	1-1/8"	1"
	BCR 1/4"	60-346-BCR4	1-7/8"	1"
	NPT 1/4"	60-346-MN4	1-3/8"	1"
350	Blank Plug	50-350-BP	1-1/8"	1"
	BCR 1/4"	60-350-BCR4	1-7/8"	1"
	NPT 1/4"	60-350-MN4	1-3/8"	1"
510	Blank Cap	50-510-BC	1-3/8"	1-1/8"
	BCR 1/4"	60-510-BCR4	2"	1-1/8"
	NPT 1/4"	60-510-MN4	2"	1-1/8"
540	Blank Plug	50-540-BP	1-1/8"	1"
	BCR 1/4"	60-540-BCR4	1-7/8"	1"
	NPT 1/4"	60-540-FN4	1-1/2"	1"
580	Blank Cap	50-580-BC	1-3/8"	1-1/4"
	BCR 1/4"	60-580-BCR4	2"	1-1/4"
	NPT 1/4"	60-580-MN4	2"	1-1/4"
590	Blank Cap	50-590-BC	1-3/8"	1-1/4"
	BCR 1/4"	60-590-BCR4	2"	1-1/4"
	NPT 1/4"	60-590-MN4	2"	1-1/4"
660	Blank Plug	50-660-BP	1-1/2"	1-1/8"
	BCR 1/4"	60-660-BCR4	1-1/4"	1-1/8"
	NPT 1/4"	60-660-FN4	7/8"	1-1/8"
670	Blank Plug	50-670-BP	7/8"	1-1/8"
	BCR 1/4"	60-670-BCR4	1-1/2"	1-1/8"
	NPT 1/4"	60-670-FN4	1-1/4"	1-1/8"
677	Blank Plug	50-677-BP	1"	1-1/8"
	BCR 1/4"	60-677-BCR4	1-1/2"	1-1/8"
	NPT 1/4"	60-677-FN4	1-3/8"	1-1/8"
678	Blank Plug	50-678-BP	2-1/2"	1-1/8"
	BCR 1/4"	60-660-BCR4	1-1/2"	1-1/8"
	NPT 1/4"	60-678-FN4	1-3/8"	1-1/8"
679	Blank Plug	50-679-BP4	7/8"	1-1/8"
	BCR 1/4"	60-679-BCR4	1-3/4"	1-1/8"
	NPT 1/4"	60-679-FN4	1-1/4"	1-1/8"

## CGA钢瓶阀出口密封帽

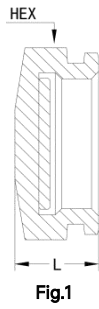


Fig.1

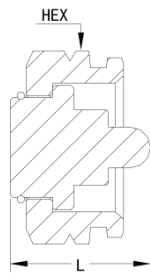


Fig.2

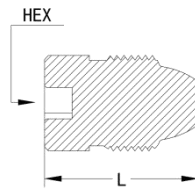


Fig.3

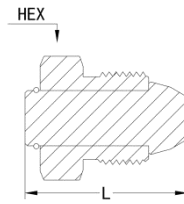
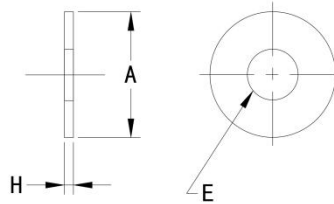


Fig.4

CGA 系列	端接形式	基本订购号	L	Fig
296	Outlet Plug	70-296-OP	-	3-4
320	Outlet Cap	70-320-OC	0.57"	1
326	Outlet Cap	70-326-OC	-	2
330	Outlet Cap	70-330-OC	0.57"	1
346	Outlet Cap	70-346-OC	-	2
350	Outlet Cap	70-350-OC	-	2
510	Outlet Plug	70-510-OP	-	3-4
540	Outlet Cap	70-540-OC	-	2
580	Outlet Plug	70-580-OP	-	3-4
590	Outlet Plug	70-590-OP	-	3-4

## 垫片



CGA 系列	端接形式	基本订购号	A	H	E
170	PVDF	30-PV-1	0.425"	0.105"	0.187"
	PCTFE	30-PC-1	0.425"	0.105"	0.187"
	PTFE	30-PT-1	0.425"	0.105"	0.187"
180	PVDF	30-PV-2	0.425"	0.105"	0.187"
	PCTFE	30-PC-2	0.425"	0.105"	0.187"
	PTFE	30-PT-2	0.425"	0.105"	0.187"
320	PVDF	30-PV-3	0.703"	0.094"	0.250"
	PCTFE	30-PC-3	0.703"	0.094"	0.250"
	PTFE	30-PT-3	0.703"	0.094"	0.250"
330	PVDF	30-PV-3	0.703"	0.094"	0.250"
	PCTFE	30-PC-3	0.703"	0.094"	0.250"
	PTFE	30-PT-3	0.703"	0.094"	0.250"
660	PVDF	30-PV-4	0.937"	0.062"	0.375"
	PCTFE	30-PC-4	0.937"	0.062"	0.375"
	PTFE	30-PT-4	0.937"	0.062"	0.375"
670	PVDF	30-PV-4	0.937"	0.062"	0.375"
	PCTFE	30-PC-4	0.937"	0.062"	0.375"
	PTFE	30-PT-4	0.937"	0.062"	0.375"
678	PVDF	30-PV-5	0.609"	0.062"	0.295"
	PCTFE	30-PC-5	0.609"	0.062"	0.295"
	PTFE	30-PT-5	0.609"	0.062"	0.295"
679	PVDF	30-PV-5	0.531"	0.062"	0.302"
	PCTFE	30-PC-5	0.531"	0.062"	0.302"
	PTFE	30-PT-5	0.531"	0.062"	0.302"

## 气体标准对应表

气体种类	分子式	UHP CGA/DISS	CGA	BS	DIN	JIS
Ammonia/氨气	NH <sub>3</sub>	720	660	10	6	22-R
Argon/氩气	Ar	718	580	3	6	22/23-R
Arsenic Pentafluoride/五氟化砷	AsF <sub>5</sub>	642	-	-	-	-
Arsine/砷化氢	AsH <sub>3</sub>	632	350	4	1	22-L
Boron Trichloride/三氯化硼	BCl <sub>3</sub>	634	660	14	8	22-L
Boron Trifluoride/三氟化硼	BF <sub>3</sub>	642	330	14	8	22-L
Bromochlorodifluoromethane/溴氯二氟甲烷	BrCClF <sub>2</sub>	-	660	6	6	-
Bromotrifluoromethane/三氟溴甲烷	BrCF <sub>3</sub>	-	660	6	6	-
Butane/丁烷	C <sub>4</sub> H <sub>10</sub>	-	510	9	1	23-L
Carbon Dioxide/二氧化碳	CO <sub>2</sub>	716	320	8	6	-
Carbon Monoxide/一氧化碳	CO	724	350	4	5	22-L
Carbonyl Sulfide/羰基硫	COS	-	330	-	-	-
Chlorine/氯	Cl	728	660	6,14	8	26-R
Chlorine Trifluoride/三氟化氯	ClF <sub>3</sub>	-	670	6	-	26-L
Chlorodifluoromethane/氯二氟甲烷	CHClF <sub>2</sub>	-	660	6	6	-
Chlorotrifluoromethane/三氟氯甲烷	CClF <sub>3</sub>	-	660	-	6	-
Diborane/二硼烷	B <sub>2</sub> H <sub>6</sub>	632	350	4	-	22-L
Dichlorodifluoromethane/二氯二氟甲烷	CCl <sub>2</sub> F <sub>2</sub>	716	660	6	6	-
Dichlorofluoromethane/二氯氟甲烷	CCl <sub>2</sub> FH	-	660	6	6	-
Dichlorosilane/二氯硅烷	H <sub>2</sub> SiCl <sub>2</sub>	636	678	15	5	-
Dichlorotetrafluoroethane/二氯四氟乙烷	C <sub>2</sub> Cl <sub>2</sub> F <sub>4</sub>	-	660	6	6	-
Diethylzinc/二乙基锌	(C <sub>2</sub> H <sub>5</sub> ) <sub>2</sub> Zn	726	510	-	-	-
1,1-Difluoroethylene/1,1-二氟乙烯	C <sub>2</sub> F <sub>2</sub> H <sub>4</sub>	-	350	-	1	22-L
Dimethylzinc/二甲基锌	(CH <sub>3</sub> ) <sub>2</sub> Zn	726	-	-	-	-
Dimethylamine/二甲胺	C <sub>2</sub> H <sub>7</sub> N	-	705	11	1	22/26-L
Dimethylether/二甲醚	C <sub>2</sub> H <sub>6</sub> O	-	510	-	1	26-L
Disilane/乙硅烷	Si <sub>2</sub> H <sub>6</sub>	632	-	-	-	-
Ethane/乙烷	C <sub>2</sub> H <sub>6</sub>	-	350	-	1	22-L
Ethyl Chloride/氯乙烷	C <sub>2</sub> H <sub>5</sub> Cl	-	300	7,17	1	26-L
Ethylene/乙烯	C <sub>2</sub> H <sub>4</sub>	-	350	2	1	22-L
Fluorine/氟	F <sub>2</sub>	-	679	-	8	22-R
Germane/锗烷	GeH <sub>4</sub>	632	350	-	-	-
Halocarbon 11/三氯一氟甲烷	CCl <sub>3</sub> F	716	660	-	-	-
Halocarbon 115/一氯五氟乙烷	ClCF <sub>2</sub> CF <sub>3</sub>	716	660	6	6	-
Halocarbon 12/二氯二氟甲烷	ClC <sub>2</sub> F <sub>2</sub>	716	660	6	6	-
Halocarbon 13/一氯三氟甲烷	ClCF <sub>3</sub>	716	660	6	6	-
Halocarbon 14/四氟化碳	CF <sub>4</sub>	716	320,580	6	6	-
Halocarbon 23/三氟甲烷	CHF <sub>3</sub>	716	660	6	6	-
Halocarbon 116/六氟乙烷	CF <sub>3</sub> CF <sub>3</sub>	716	660	-	-	-
Helium/氦气	He	718	328	3	6	22/23-R
Hydrogen/氢气	H <sub>2</sub>	724	350	4	1	22-L
Hydrogen Bromide/溴化氢	HBr	634	330	-	8	26-L
Hydrogen Chloride/氯化氢	HCl	634	330	-	8	22-L
Hydrogen Fluoride/氢氟酸	HF	632	350	4	1	22-L
Hydrogen Iodide/碘化氢	HI	670	330	-	-	-
Hydrogen Selenide/硒化氢	H <sub>2</sub> Se	632	330	4	5	-
Hydrogen Sulfide/硫化氢	H <sub>2</sub> S	722	350	15	5	-
Isobutane/异丁烷	C <sub>4</sub> H <sub>10</sub>	-	510	2	1,2,4	-
Isobutylene/异丁烯	C <sub>4</sub> H <sub>8</sub>	-	510	2	1	23-L
Krypton/氪	Kr	718	510	3	6	22/23-R
Neon/氖气	Ne	718	580	3	6	22/23-R
Nitrogen/氮气	N <sub>2</sub>	718	580	3	10	22/23-R
Nitrous Oxide/笑气	N <sub>2</sub> O	712	580	13	11	-
Oxygen/氧气	O <sub>2</sub>	714	540	3	9	22/23-R
Perfluoropropane/八氟丙烷	C <sub>3</sub> F <sub>8</sub>	716	660	-	-	-
Phosgene/碳酰氯	CCl <sub>2</sub> O	-	660	6,14	8	26-R
Phosphine/磷化氢	PH <sub>3</sub>	632	350	4	1	-

## 气体标准对应表

气体种类	分子式	UHP CGA/DISS	CGA	BS	DIN	JIS
Phosphorus Pentafluoride/五氟化磷	PF <sub>5</sub>	642	330	-	-	-
Silane/硅烷	SiH <sub>4</sub>	632	350	3	1	-
Silane Tetrachloride/四氯化硅	SiCl <sub>4</sub>	636	678	14	-	-
Silane Tetrafluoride/四氟化硅	SiF <sub>4</sub>	642	330	6	8	-
Sulphur Dioxide/二氧化硫	SO <sub>2</sub>	-	660	10,16	7	-
Sulphur Hexafluoride/六氟化硫	SF <sub>6</sub>	716	590	6	6	26-R
Trichlorosilane/三氯氢硅	SiHCl <sub>3</sub>	636	678	-	-	-
1,1,1-Trichlorotrifluoroethane/1,1,1三氯三氟乙烷	C <sub>2</sub> Cl <sub>3</sub> F <sub>3</sub>	716	660	-	-	-
Triethylaluminium/三乙基铝	AlC <sub>6</sub> H <sub>15</sub>	726	510	-	-	-
Trimethylamine/三甲胺	C <sub>3</sub> H <sub>9</sub> N	-	705	11	1	26-L
Tungsten Hexafluoride/六氟化钨	WF <sub>6</sub>	638	670	-	8	-
Vinyl Bromide/溴乙烯	C <sub>2</sub> H <sub>3</sub> Br	-	510	-	1	26-L
Vinyl Chloride/氯乙烯	C <sub>2</sub> H <sub>3</sub> Cl	-	510	7	1	26-L
Vinyl Fluoride/氟乙烯	C <sub>2</sub> H <sub>3</sub> F	-	350	-	1	22-L
Xenon/氙气	Xe	718	580	3	6	22/26-L

\*以上表格内容,仅供参考。详情请查阅: CGAV-1-2013,BS 341 Part 1 1991,DIN 477 Teil 1,AFNOR NF E 29-650,JIS B 8246 2004。